



DESSMANN Smart Lock

Corporation
DESSMANN Schliessanlagen GmbH
Königstraße 26
Stuttgart, Germany

Manufacturer
DESSMANN (China) Machinery & Electronic Co., Ltd
Jianghui South Road, Binjiang
Hangzhou, PRC

Sales
info@dessmannlock.com
www.dessmannlock.com

User Guide

Version No.: A2
All photos here are for reference only, specifications are subject to the physical product.

www.dessmannlock.com

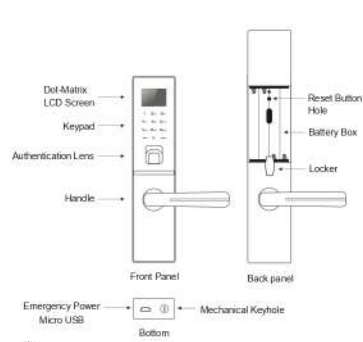
1.Instruction	
1.1 Technical Data	01
1.2 Product Description	02
2.Basic Instructions	
2.1 Batteries Installation	03
2.2 Mechanical Key	03
2.3 Emergency Power	04
2.4 Factory Reset	04
3.Lock Menu	
3.1 Fingerprint and password lock(S510/S710/G800/G811/K5)	05
3.2 Fingerprint,password and card lock(S710FPC/G800PFC)	05
3.3 Password and card lock(C510/C800)	06
4.Product Maintenance&Product Warranty	
4.1 Product Maintenance	07
4.2 Product Warranty	08

1.1 Technical Data

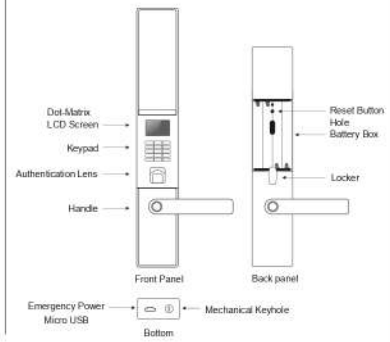
	Card Lock		Fingerprint Lock			
	C510	C800	S510	S710	G800/G810/G811	K5
Front panel						
Dimensions	330×70×34	302×70×27	330×70×34	330×74×36	302×70×27	572×72×24
Body material	Zinc Alloy					
Locking bolt material	Stainless Steel					
Keypad type	Physical Keypad, Touch Keypad					
Unlocking Methods	Card, Password, Mechanical Key		Fingerprint, Password, Mechanical Key			

1.2 Product Description

Straight Panel Style (C800/G800/G810/G811)



Sliding Panel Style (C510/S510/S710/K5)

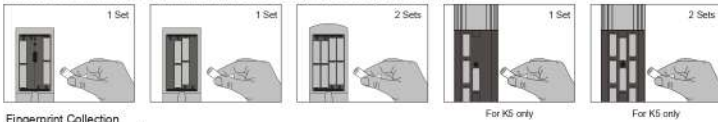


Note

For the specific positions of Micro USB and mechanical keyhole, please refer to the Item 2.2 and 2.3.

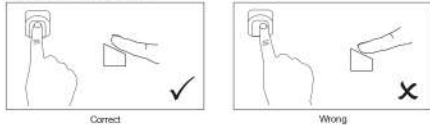
2.1 Batteries Installation

One set of 4AA batteries is required to power the lock, Two sets are strongly required for longer power supply.



Fingerprint Collection

Put your finger on the lens correctly.

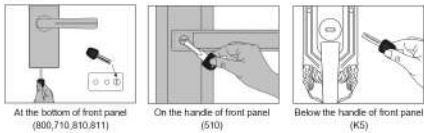


Note

1. For better Collection, make sure your finger is clean & dry.
2. Please keep out the strong light when input fingerprint.

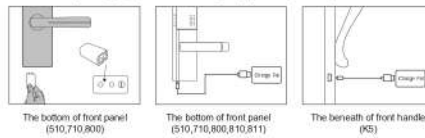
2.2 Mechanical Key

Insert the mechanical key into the hole, then rotate it 90 degrees clockwise and press down the handle to open the door.



2.3 Emergency Power

When the battery is running out, please use the emergency power to power the system.



Note

9V batteries or power supply with Micro USB could be used for emergency power.

2.4 Factory Reset

Option 1: Firstly please press any key on the keypad to start the system, then press the [MENU] and input fingerprint to enter, choose <1 Settings> -- <6 Factory Reset>. Press [] to move the cursor to [Confirm], then press [Enter] and input the admin fingerprint, after authentication, "factory reset successful" will display on the screen.

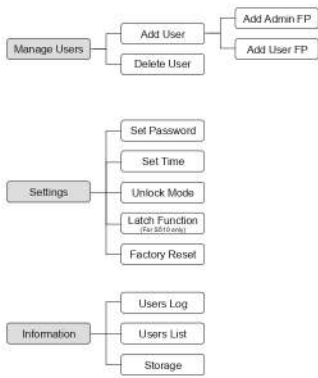
Option 2: Open the battery cover, leave one set of 4 batteries and take one single battery out, keep pressing reset button with the reset stick, then install another AA battery. "Factory Reset ?" will display on the screen, press [ENTER] to confirm.



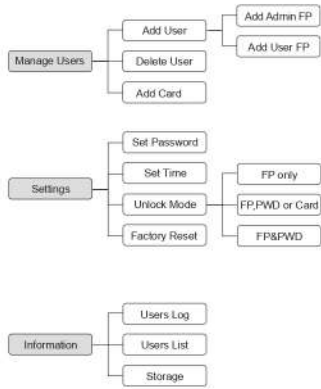
Note

The reset button is on the back panel, please use the reset stick to press the reset button inside the hole until the reset stick gets onto the reset button obviously.

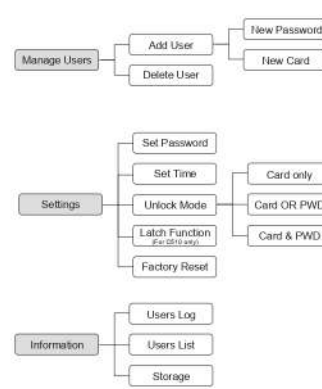
3.1 Fingerprint and password lock (S510/S710/G800/G810/G811/K5)



3.2 Fingerprint,password and card lock(S710FPC/G800FPC)



3.3 Password and card lock(C510/C600)



Note

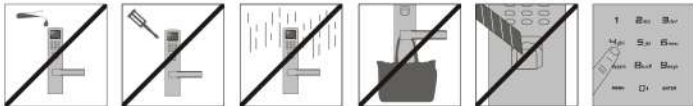
Smart Password (Default 888888)

To confuse people looking at you when you type your password, it can be inputted within a random string of number. If your password is 888888, the following combinations will still unlock the door:

- 12898588888
- 8888887556
- 87463888888451879

4.1 Daily maintenance and care

1. The lock can not be installed under very damp environment.
2. In order to prevent the dirt which caused by the long term use to affect the normal use. Use the car cleaning cream to do the maintenance once every 3-6 months. Do not use the corrosive fluid such as gasoline, alcohol to clean the lock.
3. When the batteries are low, a buzzer will hip as a warning when you open the door. Replace the batteries as soon as possible to keep on operating your lock.
4. If the door or the door frame become out of shape, it may cause the unsmooth between the bolt and the frame holes, please adjust the door or door frame appropriately.
5. To avoid damage ,please do not slam the door when the locking bolt is outside.
6. We advise you to leave the keys outside of your house, so you can get one of them in case of emergency.



Protect it from with acid, base or other corrosive substances

Do not dismantle it by yourself when the product break down

Do not install it under the environment of high humidity

Do not hang the heavy objects on the lock handle

Do not use the sharp instrument to engrave on fingerprint lens

Keep your password well and in private, change your password regularly

4.2 Product Warranty

DESSMANN warrants to the original purchaser that the hardware product shall be free from defects in material and workmanship for twelve (12) months from the date of purchase.

If a defect covered by this warranty occurs during this warranty period, DESSMANN's local distributor or a DESSMANN AUTHORIZED REPAIR CENTER will repair the defective hardware product or component, free of charge. The original purchaser is entitled to this warranty only if the date of purchase is registered at point of sale or the consumer can demonstrate, to DESSMANN's satisfaction, that the product was purchased within the last 12 months.

SERVICE AFTER EXPIRATION OF WARRANTY Please try our website at www.dessmannlock.com or call the DESSMANN's local distributor for troubleshooting information and/or referral to the local DESSMANN AUTHORIZED REPAIR CENTER. In some instances, it may be necessary for you to ship the complete product, FREIGHT PREPAID AND INSURED FOR LOSS OR DAMAGE, to the local service location. Please do not send any products to DESSMANN without contacting us first.

WARRANTY LIMITATIONS

THIS WARRANTY SHALL NOT APPLY IF THIS PRODUCT

1. IS MODIFIED OR TAMPERED WITH
2. IS DAMAGED BY NEGLIGENCE, ACCIDENT, UNREASONABLE USE, OR BY OTHER CAUSES UNRELATED TO DEFECTIVE MATERIALS OR WORKMANSHIP
3. HAS BEEN ASSEMBLED OR DISASSEMBLED, REPAIRED OR INSTALLED WITHOUT PERMISSION
4. HAS BEEN DAMAGED BY THE BATTERIES
5. AS HAD THE SERIAL NUMBER ALTERED, DEFACED OR REMOVED.

DUE TO CONTINUOUS IMPROVEMENTS, WE RESERVE THE RIGHT TO AMEND ANY ASPECT OF THE ABOVE SPECIFICATIONS WITHOUT NOTICE.

ANY APPLICABLE IMPLIED WARRANTIES, INCLUDING WARRANTIES OF MERCHANTABILITY AND FITNESS FOR A PARTICULAR PURPOSE, ARE HEREBY LIMITED IN DURATION TO THE WARRANTY PERIODS DESCRIBED ABOVE (12 MONTHS). IN NO EVENT SHALL DESSMANN BE LIABLE FOR CONSEQUENTIAL OR INCIDENTAL DAMAGES RESULTING FROM THE BREACH OF ANY IMPLIED OR EXPRESS WARRANTIES.

www.dessmannlock.com