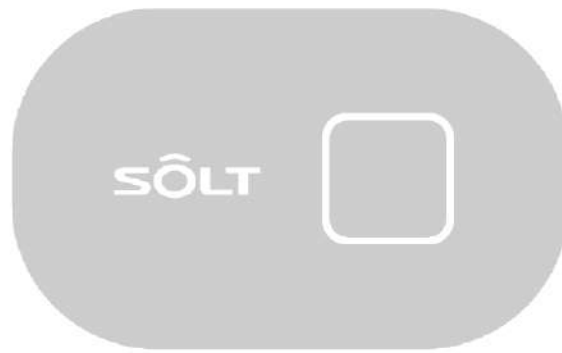


SÔLT



SOLT

Wireless Calling System

High Performance! Inimitable Designs!

High-class wireless callbell



Feel the Style

Simplicity and class for modern spaces
SOLT SB-7

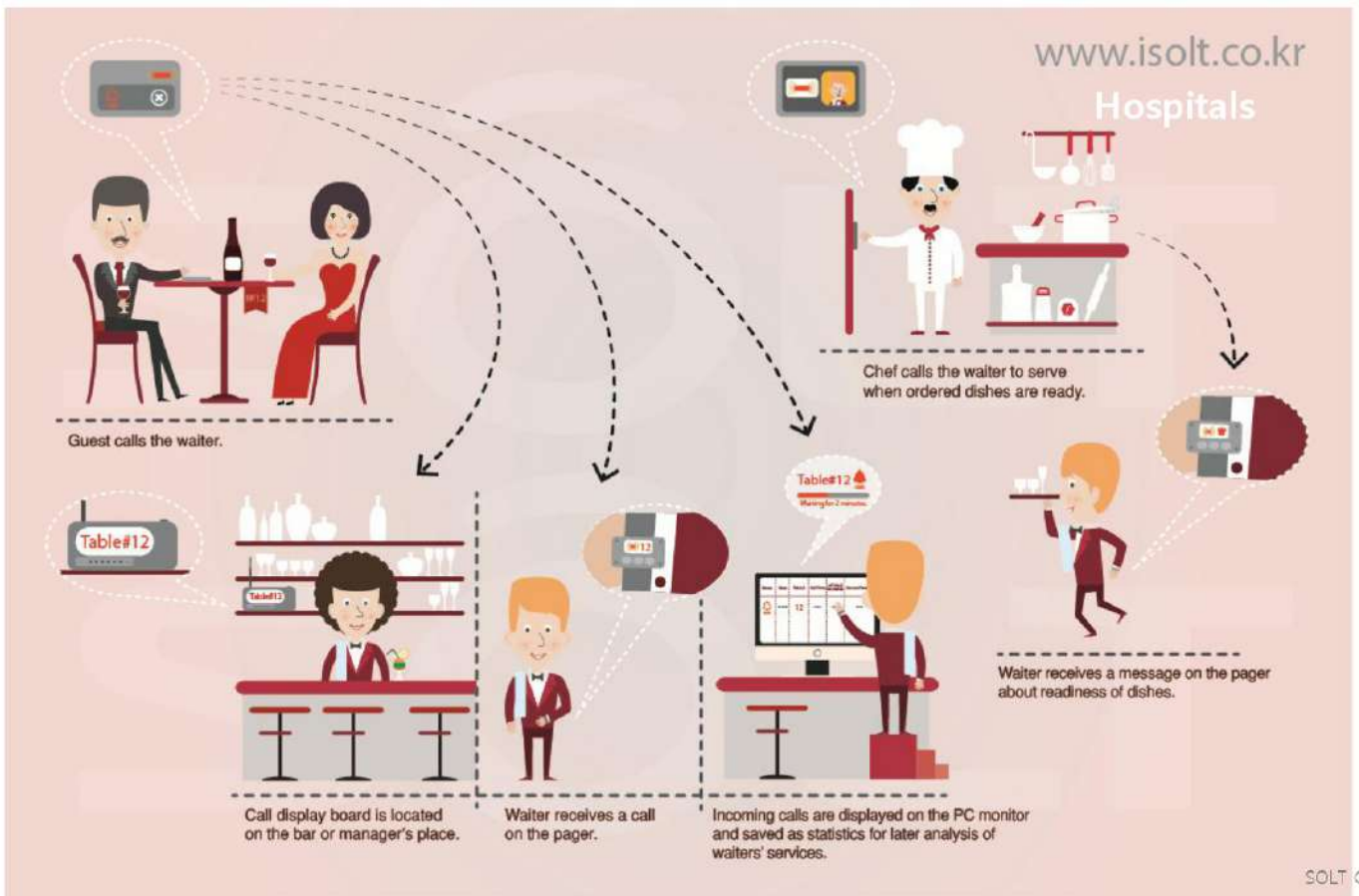


High Quality and Reliability!



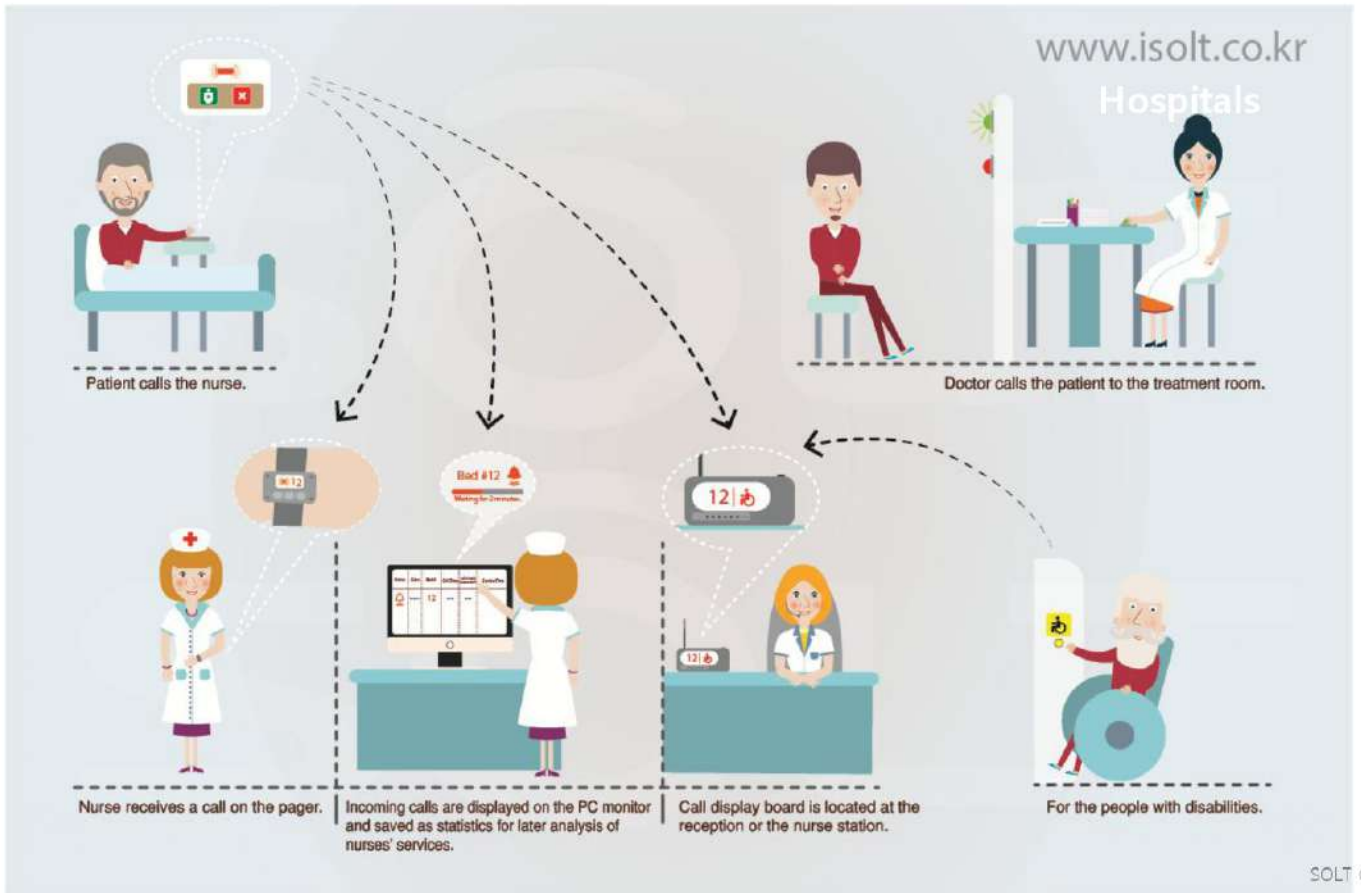
Product Application Fields

Restaurants



Product Application Fields

Hospitals



Outstanding Features of Solt system

Transmitters



Frequency Type : FSK

➤ Accuracy and Stability of call...AM type not comparable

CPU Embedded(TI solution)

➤ No duplication of bell ID...Remote IC not comparable

Transmission Controllable

➤ Battery saving, No interference to other bells

Others

➤ Longer call distance, Battery saving algorithm

Outstanding Features of Solt system

Receivers



Transmitter



Wall-mount Receiver



Mobile Receiver

Frequency Type : FSK

➤ Accuracy and Stability of call receiving... AM not comparable

TCXO-based RF

➤ Low RF variation, No clock defect, RF changeable...not X-tal

Variety of Function

➤ Sound selectable(22), Volume controllable(9 steps) etc.

System Configuration

➤ N(multiple) to N transmitter and receiver configuration

Outstanding Features of Solt system

Receivers



Transmitter



Wall-mount Receiver



Mobile Receiver

Frequency Type : FSK

➤ Accuracy and Stability of call receiving...AM not comparable

TCXO-based RF

➤ Low RF variation, No clock defect, RF changeable...not X-tal

Direct Call Receiving

➤ Direct call receiving from bells(no need transceiver)

Others

➤ Rechargeable Lithium battery, Robustness etc.

Extension of call reach range

Call reach distance is about **100m** (based on Open Field)



For extending signal reach distance and covering shaded area, use repeaters.

SOLT

Products Category

TRANSMITTERS



RECEIVERS



TRANSCIVER



APPLICATION ITEMS



TRANSMITTER

SOLT

[SINGLE-BUTTON BELLS]

MODEL	IMAGE	BUTTON	DESIGN	SIZE	WEIGHT	BATTERY			LED	COMMON SPECIFICATION
				(WxLxH)mm	(g)	TYPE	Q'TY	L/T		
SB3-1PBK(black) SB3-1PBR(brown) SB3-1PWH(white)		1 call	Slim & Echo-friendly • No coating / printing • Waterproof(IP-3)	67x42x11	20	coin cell CR2032	1	1 year	Top	<ul style="list-style-type: none"> • Transmission way : FSK • Transmission type : 360° omnidirectional • Bell ID : 1/16 million (duplicate ID almost not possible) • Antenna type : PCB <p>*** Battery lifetime : calculated based on 15 calls per day</p>
SB5-1PBK(black) SB5-1PBR(brown) SB5-1PWH(white)		1 call	Familiar & accustomed	58Øx12.6	20	coin cell CR2032	1	1 year	Top	
SB7-1PBK(black) SB7-1PWH(white)		1 call	Advanced & Luxurious • Dual-indicators (Top & bottom round) • Double-molded case • No scratch on top (Urethane material) • Waterproof(IP-7)	60Øx16	29	coin cell CR2032	2	2 year	Top & bottom	
SB9-1PBK(black) SB9-1PBR(brown) SB9-1PWH(white)		1 call	Slim & Elegant • Dual-indicators (Top & bottom round)	74x46x11	28	coin cell CR2032	2	2 year	Top & bottom	

TRANSMITTER

SÖLT

[MULTI-BUTTON BELLS]

MODEL		BUTTON	DESIGN	SIZE	WEIGHT	BATTERY	LED	COMMON SPECIFICATION
				(W x L x H mm)	(g)	TYPE / Q'TY		
SB6-2XBK(black) SB6-2XWH(white)		1 call + 1 cancel	Practical and multi-functional • Signal efficiency maximized	100x60x6.5	50	coin cell CR2450 x 2	top	<ul style="list-style-type: none"> • Transmission way : FSK • Transmission type : 360° omnidirectional • Bell ID : 1/16 million (duplicate ID almost not possible) • Antenna type : PCB • Waterproof : life waterproof • 2 year battery lifetime (based on 15 call a day)
SB6-6PBK(black) SB6-6PWH(white)		1 call + 1 cancel	Practical and multi-functional • Signal efficiency maximized	100x60x6.5	50	coin cell CR2450 x 2	top	
SB6-6XBK(black) SB6-6XWH(white)		5 call + 1 cancel (or) 3 call + 3 cancel	Practical and multi-functional • Signal efficiency maximized	100x60x6.5	50	coin cell CR2450 x 2	top	
SB9-2XBK(black) SB9-2XBR(brown) SB9-2XWH(white)		1 call + 1 cancel	Slim & Elegant Multi-functional • Dual-indicators (Top & bottom round)	74 x 46 x 11	28	coin cell CR2032 x 2	Top & bottom	
SB9-3PBK(black) SB9-3PBR(brown) SB9-3PWH(white)		3 call	Practical and multi-functional • Dual-indicators (Top & bottom round)	74 x 46 x 11	28	coin cell CR2032 x 2	Top & bottom	
SB9-3XBK(black) SB9-3XBR(brown) SB9-3XWH(white)		2call + 1cancel	Practical and multi-functional • Dual-indicators (Top & bottom round)	74 x 46 x 11	28	coin cell CR2032 x 2	Top & bottom	

RECEIVER

[MAIN DISPLAY UNITS] - Wall-mount type Receivers

MODEL	IMAGE	FND	BASIC FUNCTION	SIZE	WEIGHT (g)	COMMON SPEC.	USER SET ITEMS
SM3-22PN		2X2	Call ID display Call only No memory	288(W) 133(H) 40(T)	535	<ul style="list-style-type: none"> • Antenna : external dipole antenna • Signal receiving : FSK 360° omnidirectional • Power Supply : AC/DC12V external adaptor • Available bell ID registration : max. 1,000 bells • Bell ID form : numeric + English alphabetic + 2 dash("_", "-") and blank • Bell ID registration method : by air • Speaker : High quality and various bass 	<ul style="list-style-type: none"> • Sound type : 22 sounds • Sound level : 9 steps • Sound repeat time • Sound type for each bell • Call ID display time (PN model only) • Call overlapping time • Easy all bell ID deletion • Easy consecutive bell ID Register
SM3-23PN		2X3	Call ID display Call only No memory	288(W) 133(H) 40(T)	573		
SM3-33PN		3X3	Call ID display Call only No memory	288(W) 133(H) 40(T)	650		
SM3-33PC		3X3	Call ID display Call & cancel 20 call memory	288(W) 133(H) 40(T)	650		
SM3-61PC		6X1	Call ID display Call & cancel 20 call memory Call IDs rolling	288(W) 133(H) 40(T)	650		

RECEIVER

[PAGERS] - Portable Receivers

MODEL	IMAGE	TYPE	Display	SIZE (WxLxH mm)	WEIGHT (g)	POWER SUPPLY	FEATURES AND SPECIFICATION	USER SETTING ITEMS
SP5-100		Wrist-watch	Mono LCD 2 lines X 6 digits 	56x42x16	54	<ul style="list-style-type: none"> Rechargeable lithium-polymer Battery(600 mAh, DC 3.7V) Battery stand-by time : max. 30 hours 	<ul style="list-style-type: none"> Antenna : built-in helical antenna Signal receiving : FSK 360° omnidirectional Available bell ID registration : max. 1,000 bells Bell ID form : numeric + English alphabetic + two dashes("-","-") and bank 10 call memory 	<ul style="list-style-type: none"> Call alarm method : sound(beep/chirp) or vibration(low – high) or beep sound + vibration Time display on / off Receiving limit bell ID Call overlapping time Reminder alert Easy all bell ID deletion Easy consecutive bell ID Registration
SP5-200		Belt-clip			50			
SP7-100		Wristwatch	FSTN LCE with white backlight (re :96X64)	37x49x13.5	38	<ul style="list-style-type: none"> Rechargeable lithium-polymer Battery(250 mAh, DC 3.7V) Battery stand-by time : more or less 40 hours 	<ul style="list-style-type: none"> Display : 0.9" LCD Available bell ID : 900 pcs 50 Call number memory Call order check function Easy setting with icons 	<ul style="list-style-type: none"> Time Alarm method Bell ID Others (DUPT, alarm repeat, Reminder alarm etc.) Data copy(device to device –cable option)


[PC MONITORING RECEIVER]

MODEL	IMAGE	SIZE (WxLxH mm)	WEIGHT (g)	POWER	FEATURES	SPECIFICATION
SR5-MPR and PC MONITORING PROGRAM		146 X 90 X 32	118	AC/DC12V Adapter	<ul style="list-style-type: none"> Display : 1.3"LCD(back side) Available bell ID : 500 pcs Bell ID registration method : by air Call Display Call Data management 	<ul style="list-style-type: none"> Antenna : external dipole antenna Signal receiving : FSK 360° omnidirectional PC Interface : via RS-232 Converter 4 programs included : <ul style="list-style-type: none"> Map Type call only Map Type call-cancel Stack Type call only Stack Type call-cancel

TRANSCEIVER

SOLT

[REPEATER]

MODEL	IMAGE	Display	BASIC FUNCTION	SIZE	WEIGHT (g)	POWER	FEATURES	USER SET ITEMS
SR5-BPR		1.3"LCD on back side	Extension of signal reach distance between bell and receiver	146(W) 90(H) 32(T)	116	AC/DC12V external adaptor Adapter	<ul style="list-style-type: none"> • Available bell ID : 500 pcs • Bell ID registration method : by air or by SPM(Solt PC Manager) 	<ul style="list-style-type: none"> • Transmission delay time • Mount point : Wall or ceiling • Easy all bell ID deletion • Easy consecutive bell ID register

APPLICATION ITEMS

SOLT

[TRANSMITTERS]

MODEL	IMAGE	CATEGORY	ORIGIN MODEL	APPLICATION FIELDS	FUNCTIONALITY	SPECIFICATION
SB5-1PWH-P		Transmitter (call only)	SB5-1PWH	Hospitals	Wired Push-button	Push-button cable : 1.5 m
SB6-2XWH-P		Transmitter (call-cancel)	SB6-2XWH	Hospitals	Curly-wired Push-button (Fixed)	Push-button cable : 1.5 m
SB6-2XWH-PD		Transmitter (call-cancel)	SB6-2XWH	Hospitals	Straight-wired Push-button (Detachable)	Push-button cable : 1.5 m
SB6-2XWH-F		Transmitter (call-cancel)	SB6-2XWH	Hospitals	Wired Stepping button	Step-button cable : 1.5 m
SB6-2XWH-S		Transmitter (call-cancel)	SP5-1PWH	Hospitals	Pull-String button	Pull-String cable : 1.0 m
SB6-DOP		Transmitter (call only)	SB6	Hospitals Offices	Magnet Sensing of door opening	Bell part and Magnet part
SB6-PMP		Transmitter (call-cancel)	SB6	Hospitals	Magnet Sensing of Patient's movement	Bell part and Magnet part
STS-100FM		Transmitter (call-cancel)	SB6	Hospitals	Stepping Sensing	Mat(sensing part) and Bell Part
SB9-1P**~M		Transmitter (call-cancel)	SB9-2X	Hospitals Shopping malls Super markets etc.	Magnet Sensing Cancel Button	Bell part and Magnet part

Certification

CE(EU)



Wireless call bell



main transceiver



Wireless receiver



repeater

FCC(USA)



bell



Main



repeater



pager

MIC(Japan)



bell(SB3)



Bell(SB7)



Bell(SB9)



Repeater_SR5)

Others



ISO-9001



Solt Trademark



waterproof IP-X&(SB7)